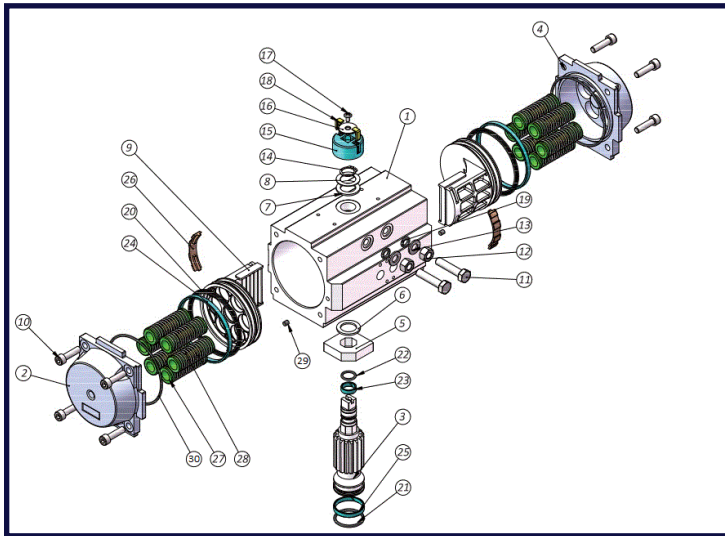


The pneumatic rack & pinion actuator is manufactured using the latest materials and methods to provide dependable and smooth operation in demanding process control applications.



EZ-Tork DESIGN FEATURES

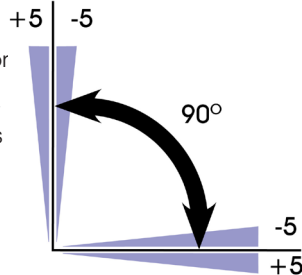
- ✓ Hard Anodized aluminum housing
- ✓ "Versa-View" Continuous mechanical position indicator
- ✓ Nickel Plated Alloy drive shaft
- ✓ ISO/NAMUR design for universal mounting and accessory attachment
- ✓ Bi-Directional Stroke Adjustment
- ✓ 1/8", 1/4", and 1/2" NPT air inlet manifold



ITEM	DESCRIPTION	MATERIAL SPECIFICATIONS
1	Body	Aluminum Alloy Hard Anodized
2	Left End Cap	Aluminum Alloy
3	Drive Shaft	Alloy Steel & Nickel Plated
4	Right End Cap	Aluminum Alloy
5	Stroke Adjustment Stop	Alloy Steel
6	Thrust Bearing (Pinion Top)	POM + PTFE
7	Thrust Bearing	POM + PTFE
8	Thrust Washer	Stainless Steel
9	Piston	Aluminum Alloy
10	Cap Screw (End Cap)	Stainless Steel
11	Stop Top Screw	Stainless Steel
12	Nut (Stop Screw)	Stainless Steel
13	Washer (Stop Screw)	Stainless Steel
14	Spring Clip	Spring Steel
15	Indicator Cap	POM + PTFE
16	Indication Thrust Bearing	Stainless Steel
17	Cap Screw (End Cap)	Stainless Steel
18	Position Indicator	Nylon
19	O-Ring (Stop Screw)	NBR
20	O-Ring (Piston)	NBR
21	O-Ring (Pinion Bottom)	NBR
22	O-Ring (Pinion Top)	NBR
23	Bearing (Pinion Top)	POM + PTFE
24	Bearing (Piston Head)	POM + PTFE
25	Bearing (Pinion Bottom)	POM + PTFE
26	Wear Band	POM + PTFE
27	Spring Seat	POM + PTFE
28	Spring	High Carbon Steel
29	Plug	NBR
30	O-Ring (End Cap)	NBR

BI-DIRECTIONAL STROKE ADJUSTMENT

EZ-Tork actuators feature bi-directional pinion travel stops. These stops allow for true +/- 5° for valve travel adjustment to ensure precise positioning in all flow control services. The EZ-Tork travel stops are designed to absorb the maximum rated torque of the actuator and the maximum impact loads associated with the recommended stroke speed.



What do you need today?™

HIGH PURITY
CleanFLOW®

PRO-SPEC
PROCESS SPECIFIC
WWW.PRO-SPEC.NET

QUALITY FLOWS
THROUGH US

EZ-Tork WEIGHTS

Model	DA		SR	
	lbs	kg	lbs	kg
32	1.8	0.8	n/a	n/a
50	2.6	1.2	2.9	1.3
95	4.6	2.1	5.1	2.3
75	6.4	2.9	7.1	3.2
85	8.4	3.8	9.3	4.2
95	12.1	5.5	13.4	6.1
110	14.6	6.6	16.8	7.6
125	24.9	11.3	28.4	12.9
140	30.4	13.8	35.1	15.9
160	45.2	20.5	52.7	23.9
190	64.4	29.2	76.5	34.7
210	89.7	40.7	108.9	49.4
240	146.8	66.6	176.4	80.0
270	179.5	81.4	224.7	101.9
300	238.1	108.0	298.9	135.6
350	323.4	146.7	414.7	188.1
400	486.1	220.5	625.0	283.5



HOW TO ORDER EZ-Tork ACTUATORS

Series	Model	Springs	Seals
EZD = Double Acting	32*	9	B = Buna (Standard -5°F to 176°F / -15°C to 80°C)
EZS = Spring Return	50	11	V= Viton (High Temperature -5°F to 300°F / -15°C to 150°C)
	65		
	75		S=Silastic (Low Temperature -76°F to 176°F / -60°C to 80°C)
	85		
	95		
	110		
	125		
	140		
	160		
	190		
	210		
	240		
	270		
	300		
	350		
	400		*Model 32 only available as double acting




EZ-Tork SPRING RETURN OUTPUT TORQUES (in-lbf)

	Supply Pressure			Supply Pressure	
	60 PSI			80 PSI	
Model	Torque		Model	Torque	
EZS-50-9	56		EZS-50-11	68	
EZS-65-7	108		EZS-65-9	139	
EZS-75-9	171		EZS-75-11	208	
EZS-85-9	242		EZS-85-11	302	
EZS-95-9	352		EZS-95-11	430	
EZS-110-9	456		EZS-110-11	557	
EZS-125-9	813		EZS-125-11	993	
EZS-140-9	1238		EZS-140-11	1,529	
EZS-160-9	1752		EZS-160-11	2,142	
EZS-190-9	2796		EZS-190-11	3,452	
EZS-210-9	3909		EZS-210-11	4,779	
EZS-240-9	6237		EZS-240-11	7,699	
EZS-270-9	8661		EZS-270-11	10,692	
EZS-300-9	10813		EZS-300-11	13,354	
EZS-350-9	15841		EZS-350-11	19,362	
EZS-400-9	24969		EZS-400-11	30,686	

DOUBLE ACTING TORQUE RATINGS (in-lbf)

	Supply Pressure	
	60 PSI	80 PSI
Model	Torque	Torque
EZD-32	47	58
EZD-50	142	175
EZD-65	288	355
EZD-75	447	551
EZD-85	657	809
EZD-95	922	1,137
EZD-110	1,206	1,483
EZD-125	2,154	2,650
EZD-140	3,186	3,912
EZD-160	4,412	5,427
EZD-190	6,956	8,538
EZD-210	9,712	11,919
EZD-240	15,064	18,490
EZD-270	21,180	25,995
EZD-300	27,253	33,447
EZD-350	40,446	49,638
EZD-400	61,632	75,639